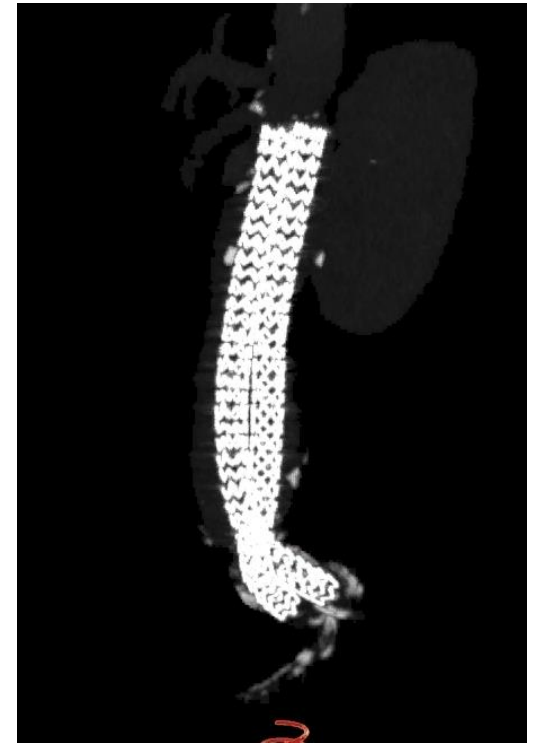


Why EVAS Is The Best Graft For Chimneys

Ian Loftus

**St Georges Vascular Institute,
London, UK**



Disclosure

Speaker name: Ian Loftus

I have the following potential conflicts of interest to report:

- x Consulting: Endologix, Gore
- x Shareholder in a healthcare company: Inotec

Other(s)

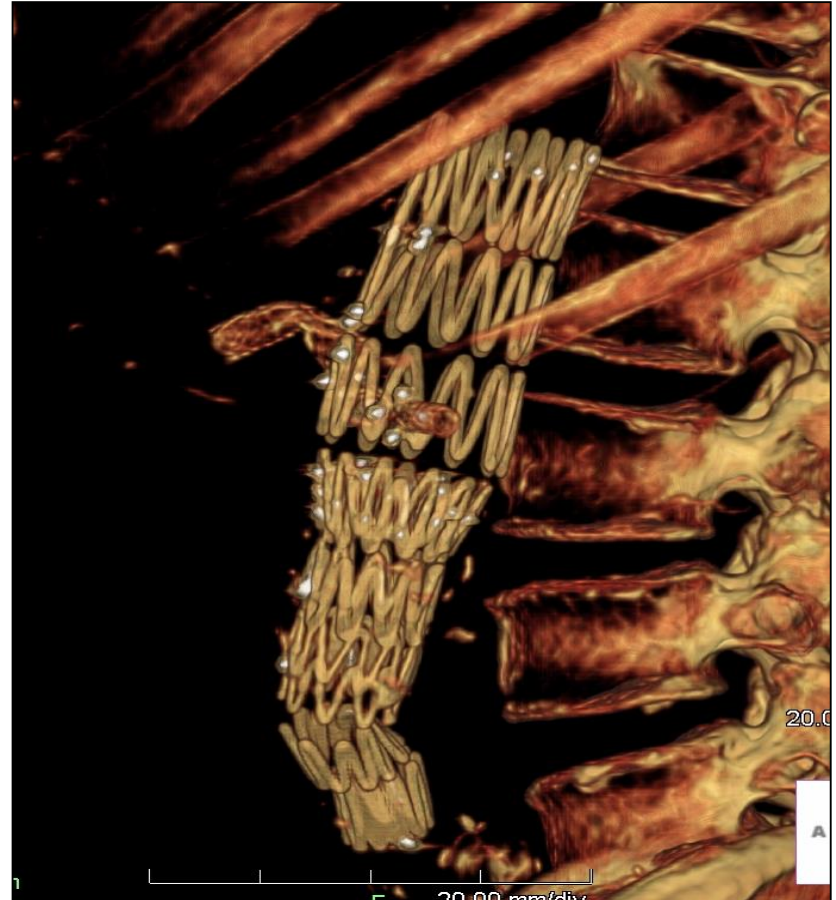
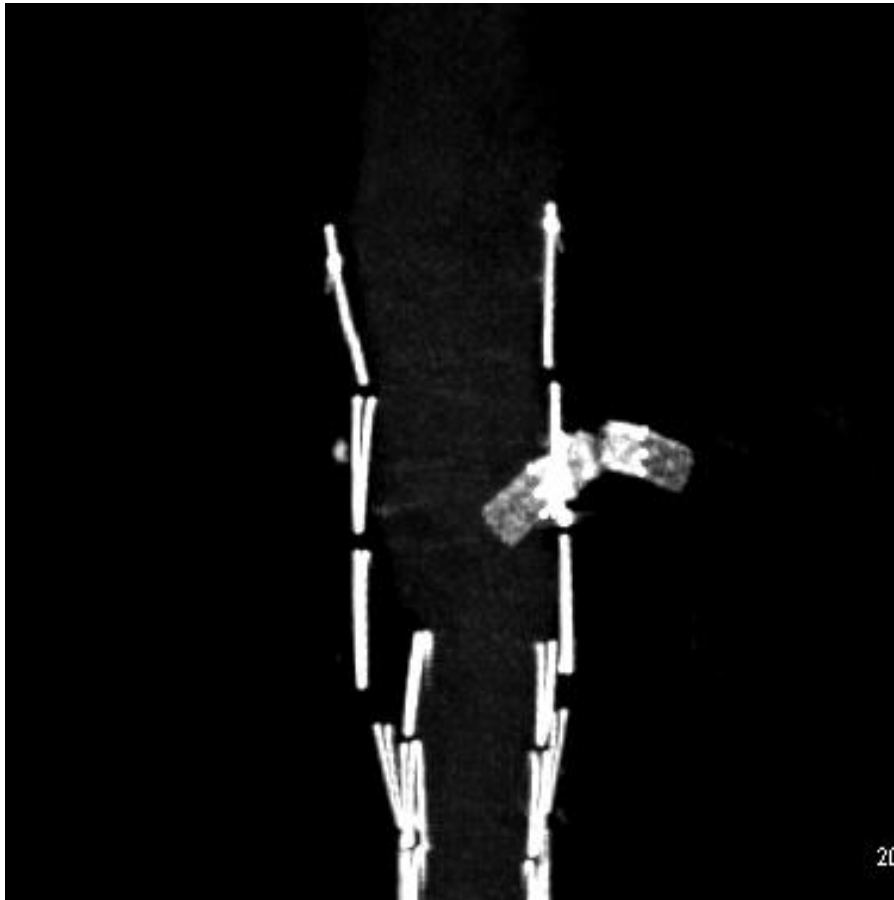
Research: Medtronic

Endovascular Treatment Of Complex AAA

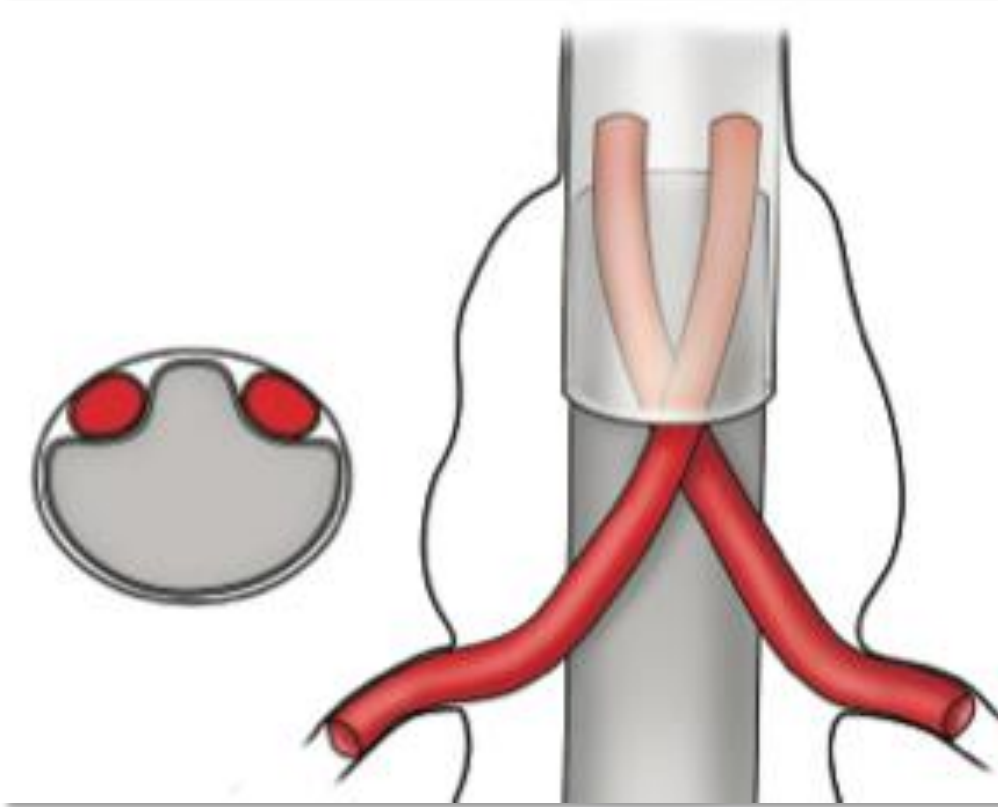


- FEVAR ‘gold-standard’
- Restricted by anatomy, cost and time
- High mortality/morbidity in complex anatomies
- ‘Off the shelf’ FEVR limited

Endovascular Treatment Of Complex AAA



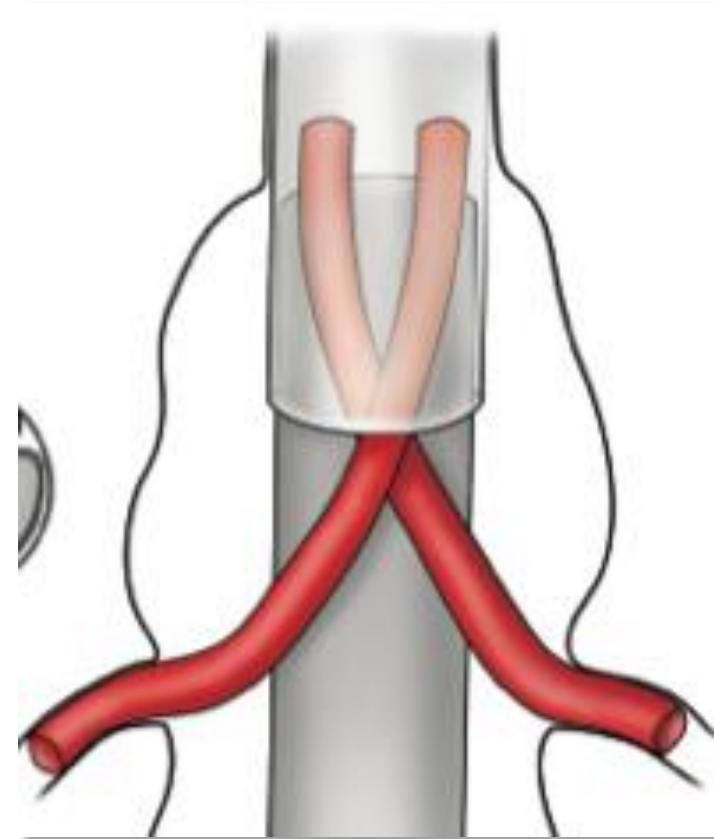
Chimney EVAR



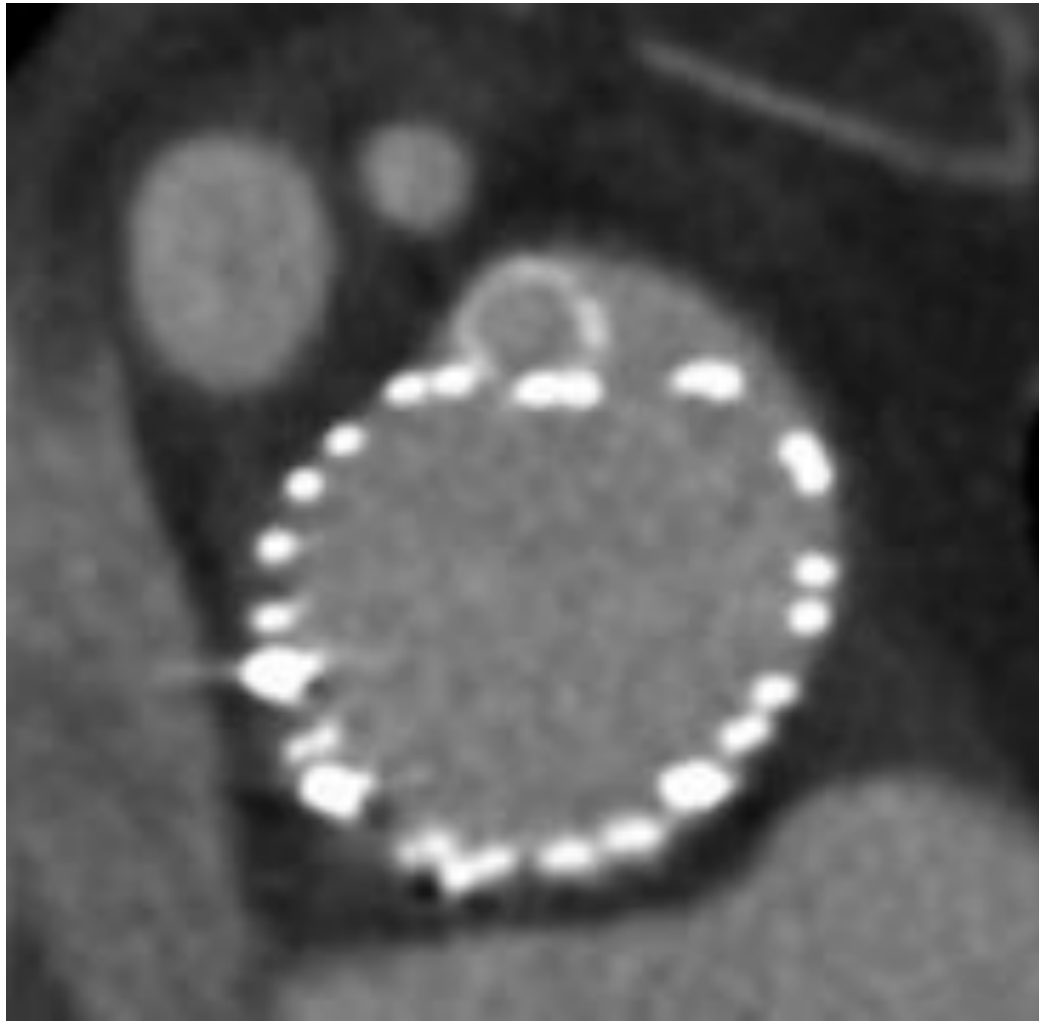
- **Treat more patients**
- **Early results better than expected**

Chimney EVAR: *Pericles Registry*

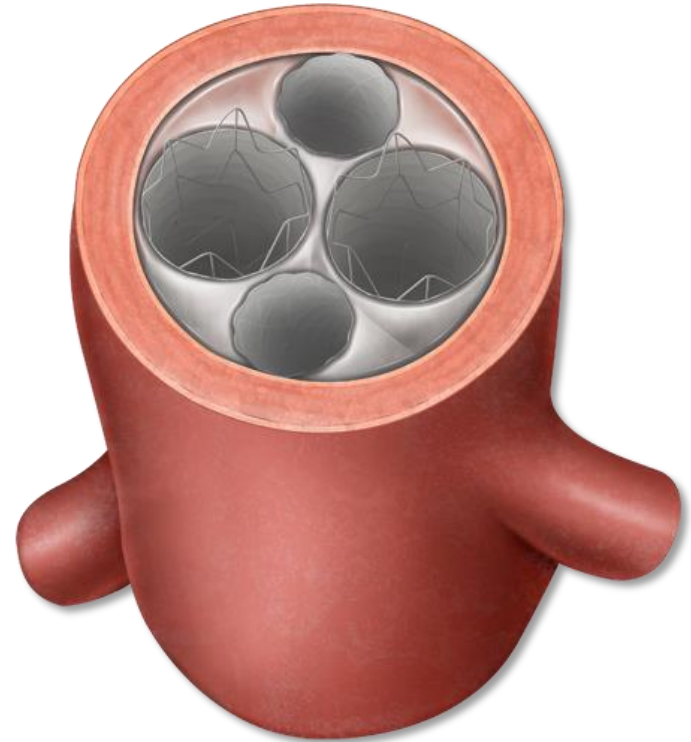
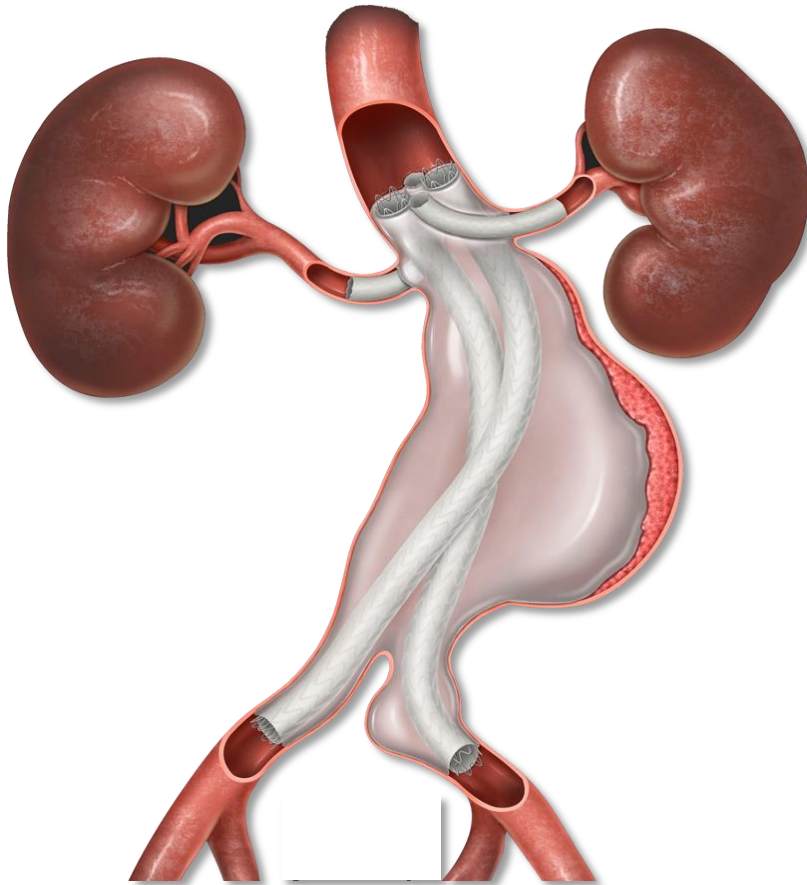
	PERICLES (n=517)
SINGLE	70% (Juxtarenal)
DOUBLE	
TRIPLE/QUADRUPLE	30% (Suprarenal)
PERSISTENT TYPE I ENDOLEAK	2.9%
TARGET VESSEL PATENCY	92%
FREEDOM FROM ACM	85%



Chimney EVAR: *Gutter Endoleaks*



Chimney EVAS





Parallel Grafts and EVAS – St Georges

- July 2013 – October 2016
- 69 cases
- Unsuitable for other techniques
- Mean follow up > 300 days
- Mean no of chimneys 1.64



Parallel Grafts and EVAS – Outcomes

Adverse event	n	Re-intervention
30 day mortality	1	N/A
Late mortality	4	N/A
Type 1 endoleak	4	Embolisation x3 successful Iliac stent x2
Limb occlusion	4	Iliac-fem crossover x1 Asymptomatic
CFA occlusion (access site)	1	Embolectomy & vein patch
Stroke	2	N/A
Acute kidney injury	1	Angioplasty of right renal stent

Parallel graft patency 98.3%

- Post-market registry: Nellix with Chimneys
- Open-label, single-arm, no prospective screening
- 200 patients, 10 international centers, 5y F/U
- Endpoints typical of EVAR in complex AAA



De Novo Procedures (154)

Single
40.3%

N=62

LRA = 33, RRA = 27

SMA = 1

Not Specified = 1



Double
35.1%

N=54

Both RA = 49

RA and SMA = 4

Not Specified = 1



Triple
17.5%

N=27

Both RA, SMA = 24

RA, SMA, CA = 2

Not Specified = 1



Quadruple
7.1%

N=11

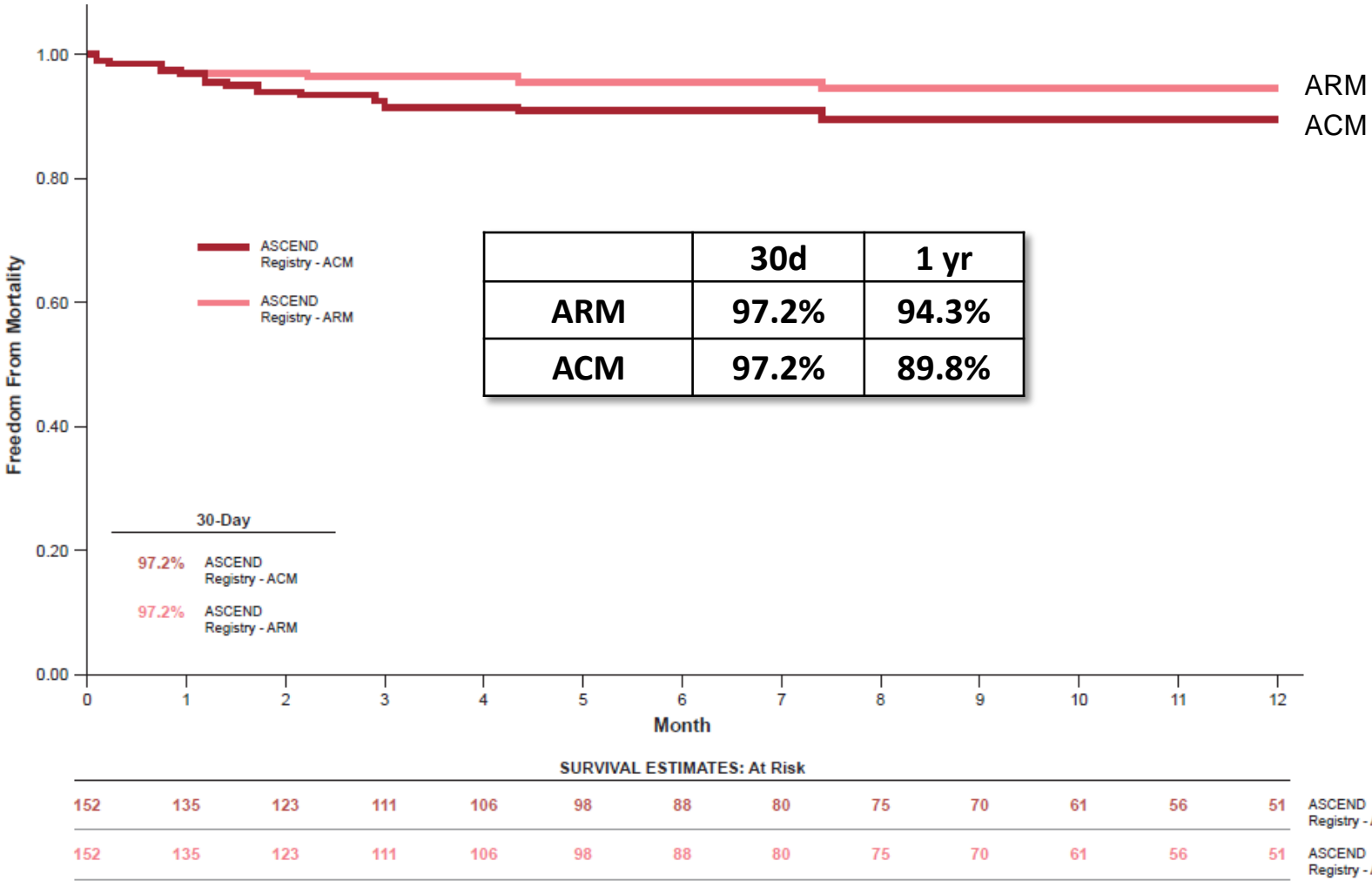
Both RA, SMA, CA



De Novo Procedures (154): 30 Day Outcomes

	n	%
Mortality	4/154	2.6%
Stroke	4/154	2.6%
Renal Failure	2/154	1.3%

Freedom from Mortality



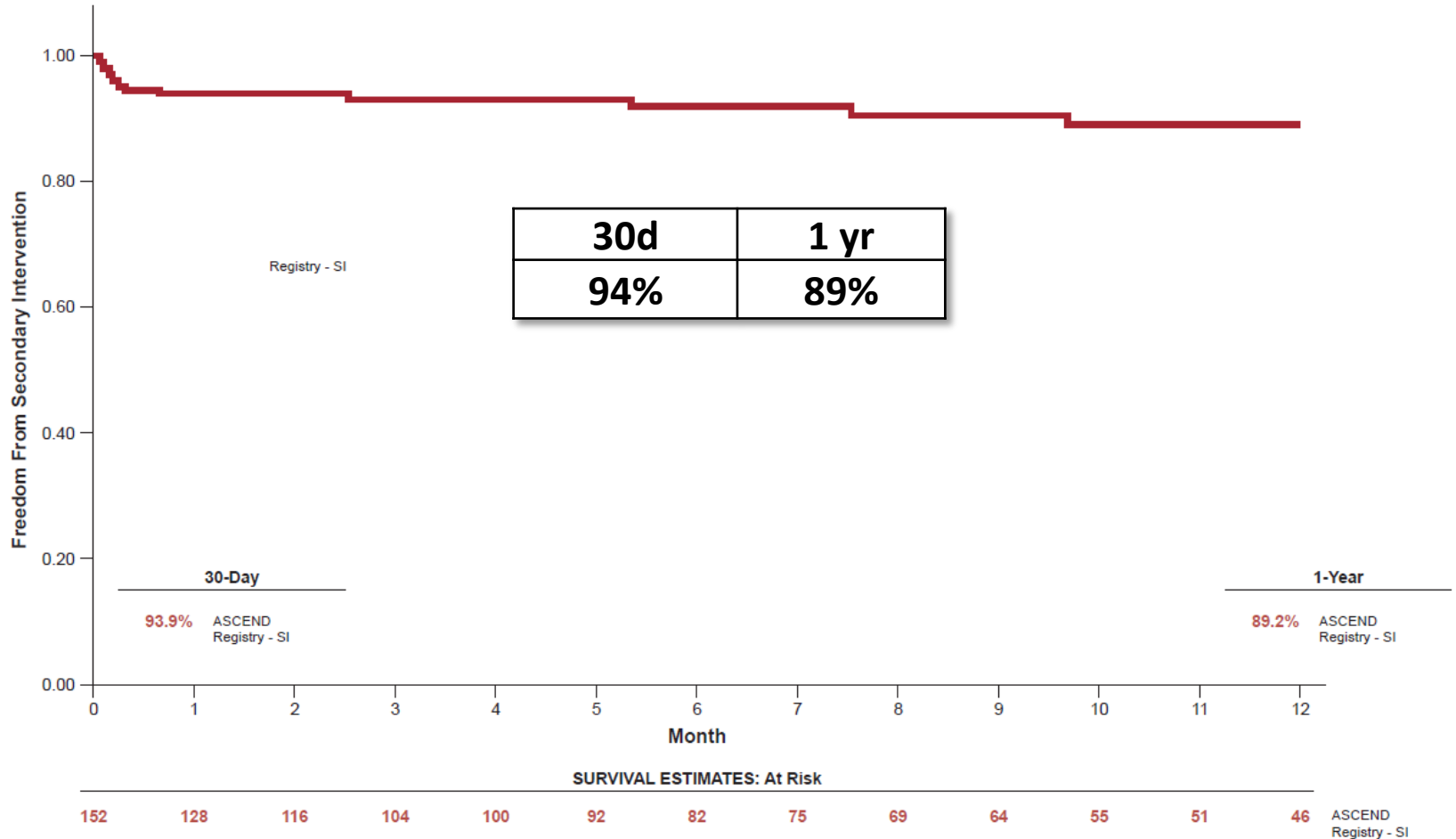
All Endoleak

	Total	Type Ia	Type Ib	Type II	Type III
Early (154)	1.9% (3)	0.6% (1)	1.3% (2)	0%	0%
Late (136)	2.9% (4)	2.9% (4)	0%	0%	0%

Type 1a Endoleak

	Total	Single	Double	Triple- Quadruple
Early (154)	0.6% (1/154)	0% (0/62)	1.9% (1/54)	0% (0/38)
Late (136)	2.9% (4/136)	5.2% (3/58)	0% (0/51)	2.9% (1/34)

Freedom from Secondary Intervention



Chimney EVAS versus Chimney EVAR

	ASCEND (n=154)	PERICLES (n=517)
SINGLE	11%	70% (Juxtarenal)
DOUBLE	58%	
TRIPLE/QUADRUPLE	31%	30% (Suprarenal)
PERSISTENT TYPE I ENDOLEAK	0%	2.9%
TARGET VESSEL PATENCY	98% - 100%	92%
FREEDOM FROM ACM	90%	85%

Why EVAS Is The Best Graft For Chimneys?

- Design advantages over EVAR for a seal
- Reduce gutter endoleaks
- Applicable to almost all.....
- Early/Mid-term results prove concept
- Long term results outcomes important

